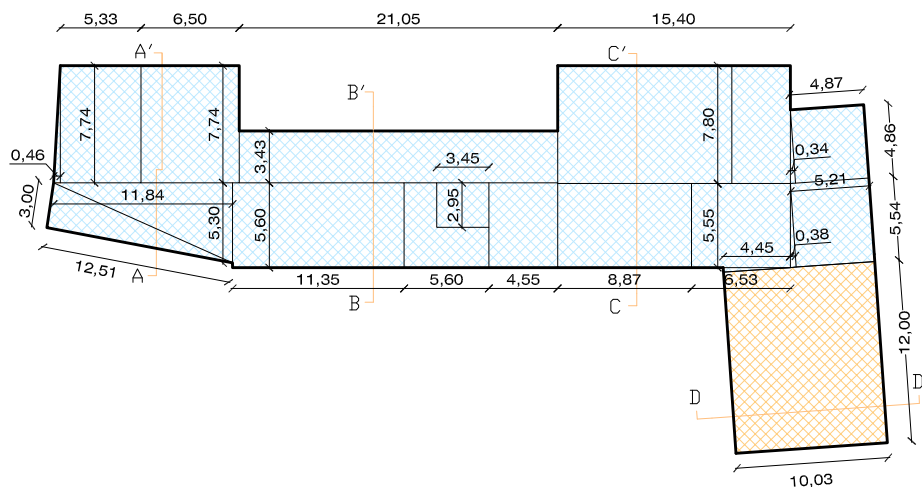


EDIFICIO 3 - Stato di Fatto

PIANO TERRA



$$\begin{aligned} \text{Sup. PT} &= (5,33 \times 7,74) + (0,46 \times 7,74)/2 + (6,50 \times 7,74) + \\ &+ (3,00 \times 12,51)/2 + (11,84 \times 5,30)/2 + (5,60 \times 11,35) + \\ &+ [(5,60 \times 5,60) - (2,95 \times 3,45)] + (4,55 \times 5,60) + (15,40 \times 7,80) + \\ &+ (4,87 \times 4,86) + (4,87 \times 0,34)/2 + (8,87 \times 5,55) + \\ &+ (5,55 \times 6,53) + (4,45 \times 0,30)/2 + (5,55 \times 0,38)/2 + \\ &+ (5,54 \times 5,21) + (21,05 \times 3,43) + (3,45 \times 2,95) = 596,75 \text{ mq} \end{aligned}$$

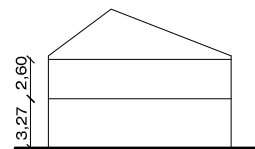
$$\text{Sup. PT} = (12,00 \times 10,03) = 120,36 \text{ mq}$$

$$\text{Sup. TOT} = 596,75 + 120,36 = \boxed{717,11 \text{ mq}}$$

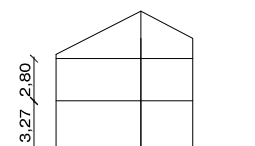
$$\text{Vol. PT} = 596,75 \times 3,27 = 1.951,37 \text{ mc}$$

$$\text{Vol. PT} = 120,36 \times 3,27 = 393,58 \text{ mc}$$

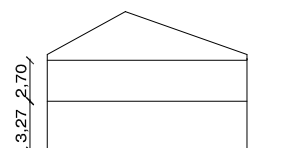
$$\text{Vol. PT} = 1.951,37 + 393,58 = \boxed{2.344,95 \text{ mc}}$$



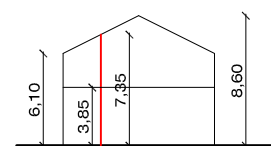
Sezione A-A'



Sezione B-B'



Sezione C-C'



Sezione D-D'